

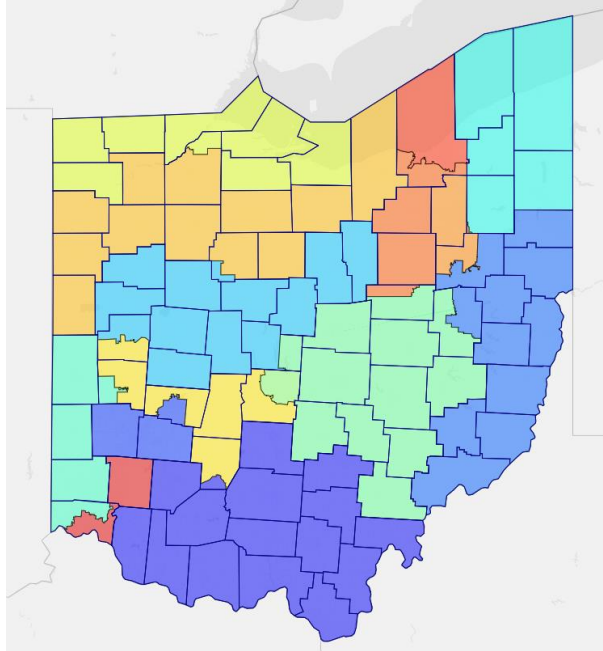
## Compromise Map v.2

Created by Ryan Brune

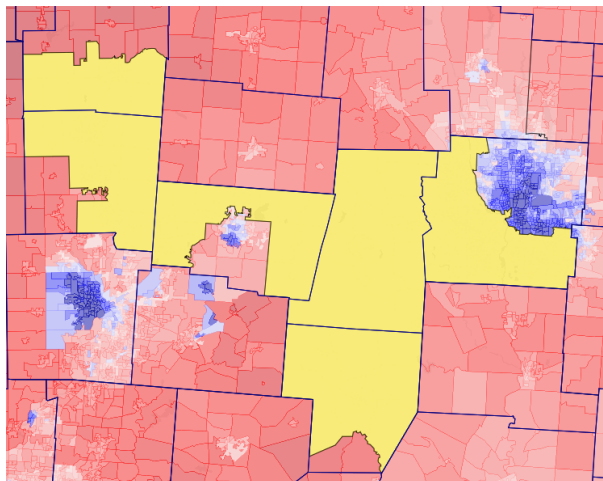
I made a minimal edit to the Republican congressional map added by Frank Strigari on 3/1/2022. The only changes I made were to the 4<sup>th</sup> and 15<sup>th</sup> congressional districts – 13/15 districts are unchanged. This map is both more fair and more compact than the Republican proposed map.

I moved the fragments of Shelby, Miami, and Clark counties that were part of the 15<sup>th</sup> congressional district into the 4<sup>th</sup>. From the 4<sup>th</sup> congressional district, I took a piece of Union County and all of 4<sup>th</sup>'s Delaware county portion and put it into the 15<sup>th</sup> district. The Republican map offered on 3/1/2022 is presented below. Along with enhanced imagery comparing its 4<sup>th</sup> and 15<sup>th</sup> congressional districts. I have additionally included imagery of my 4<sup>th</sup> and 15<sup>th</sup> districts.

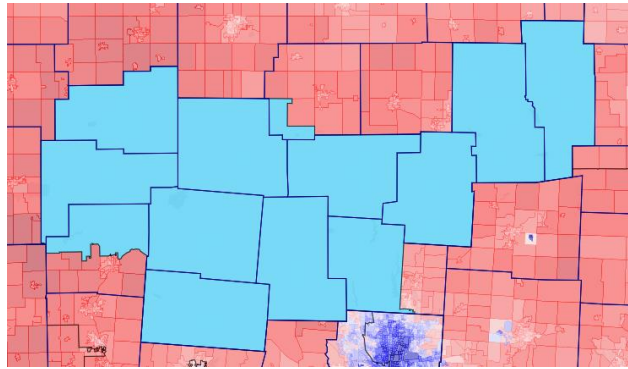
**The 3/1/2022 Republican Proposed Map**



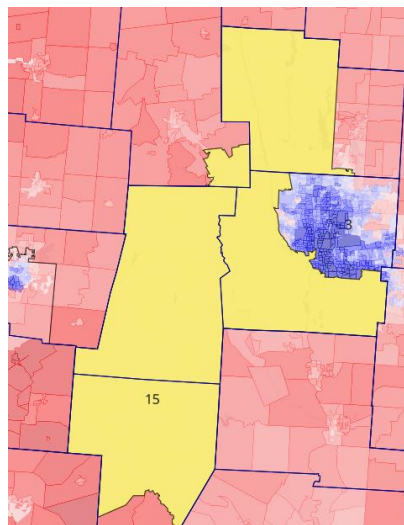
**The 3/1/2022 Republican Proposed 15<sup>th</sup> District**



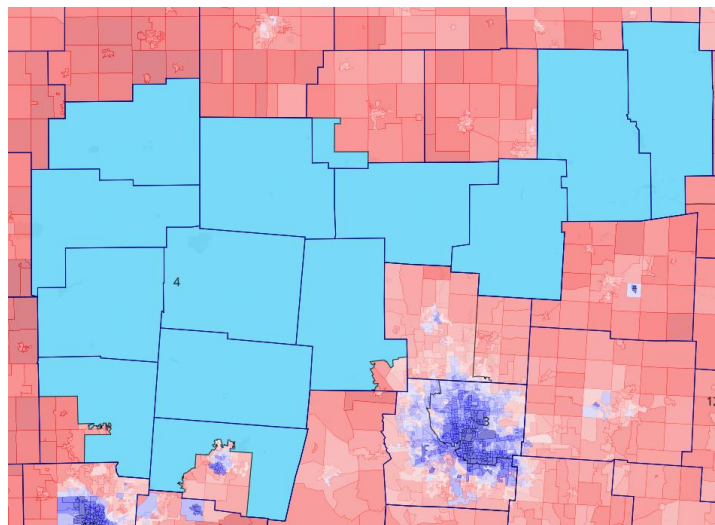
**The 3/1/2022 Proposed 4<sup>th</sup> District**



**Compromise v.2 Proposed 15<sup>th</sup> District**



**Compromise v.2 Proposed 4<sup>th</sup> District**



I would make the argument that my 4<sup>th</sup> and 15<sup>th</sup> districts are more compact than those in the Republican proposed maps. This is especially the case for the 15<sup>th</sup> where the number of county splits has decreased from 5 to 4 – and no truncated districts solely are connected to other truncated districts. Other compactness measures (for example: KIWYSI metric ) agree that my proposal provides a compact map.

The map I provide before the commission is legal. All splitting rules are followed, and there is minimal population deviation. Because all districts but district 15 and district 4 are identical to the originally proposed map I only need to address how districts 15 and 4 could be illegal.

I actually reduce the number of county splits on the overall map. The statewide limit is not exceeded. There is now one new split between the 4<sup>th</sup> and 15<sup>th</sup> congressional districts - a minor split of Jerome township in Union County. This is legal.

There are some additional compactness benefits of my maps. Although municipalities that cross county lines are not required to be kept whole, I now fully join Dublin and Plain city. No such municipalities are newly split on my map.

Not only is my proposed map more compact, but it is also fairer. The map proposed by Republicans on 3/1/2022 had 5 Democratic seats by composite and 15 Republican seats. The 15<sup>th</sup> district, a Republican district in their plan, was 54.41% Republican to 46.68% Democratic. In 2020, Biden lost the seat by 7.1%. In 2018, Cordray lost the seat by 4.3%. I cannot calculate the exact composite score for my 15<sup>th</sup> district as the composite score used by the commission and the one used by Dave's Redistrict App differ, but I can say with 100% confidence it would be close to parity – likely Democratic by composite. Biden won my proposed 15<sup>th</sup> congressional district by 3.0%. Cordray won it by 2.3%. The 4<sup>th</sup> district remains solidly Republican in both the Republican and my proposed maps.



My proposed maps are both more compact and more fair than the originally proposed maps. Additionally, it is a least change map – commissions have already seen the vast majority of the map I am here to present. From a 10R-5D map I have created a 9R-6D map. Is it a perfect map? No. I would prefer the map I presented on 3/1/2022, or the League of Woman Voter's map, but that is not plausible. This map I have proposed is.

I believe the map I have presented here could stand up to court muster. I am nearly 100% confident the Republican proposed map would (will?) not. Should the commission pass the Republican passed map there will be redistricting chaos. Deadlines will have to be extended. It's possible a special master will take over and leave nobody happy. I present my map, a least change map from a proposed alternative, as a lifeboat to both parties.

2018 Governor Statistics

Population			Shapes		Partisan Lean			Demographics (VAP)					
ID	Total	+/-			Dem	Rep	Oth	Total	White	Minority	Hispanic	Black	Asian
Un	0				0.00%	0.00%	0.00%	0	0.00%	0.00%	0.00%	0.00%	0.00%
1	786,630	0.00%	✓	✓	50.13%	47.13%	2.74%	607,518	69.17%	30.83%	3.19%	21.28%	4.55%
2	786,629	0.00%	✓	✓	30.69%	66.30%	3.01%	609,599	92.43%	7.57%	1.20%	2.70%	0.82%
3	786,630	0.00%	✓	✓	68.55%	29.25%	2.20%	616,608	59.86%	40.14%	5.30%	26.85%	6.54%
4	786,630	0.00%	✓	✓	28.59%	67.96%	3.45%	607,644	89.22%	10.78%	1.89%	5.32%	1.14%
5	786,630	0.00%	✓	✓	38.55%	58.13%	3.31%	612,230	86.04%	13.96%	6.02%	4.71%	1.25%
6	786,630	0.00%	✓	✓	41.24%	55.69%	3.07%	626,719	87.37%	12.63%	2.58%	6.95%	0.74%
7	786,630	0.00%	✓	✓	45.48%	51.77%	2.74%	623,729	88.05%	11.95%	3.05%	3.58%	3.38%
8	786,629	0.00%	✓	✓	37.31%	59.75%	2.94%	603,912	78.51%	21.49%	4.07%	11.29%	3.93%
9	786,630	0.00%	✓	✓	50.14%	46.26%	3.60%	613,653	77.70%	22.30%	5.88%	12.63%	1.72%
10	786,630	0.00%	✓	✓	45.27%	51.66%	3.07%	616,057	73.52%	26.48%	3.13%	17.93%	3.12%
11	786,630	0.00%	✓	✓	78.23%	19.55%	2.22%	622,351	44.52%	55.48%	6.88%	44.34%	3.64%
12	786,630	0.00%	✓	✓	36.85%	60.22%	2.93%	603,837	89.54%	10.46%	1.59%	4.50%	1.84%
13	786,630	0.00%	✓	✓	52.24%	44.79%	2.96%	621,319	78.71%	21.29%	2.16%	13.35%	3.42%
14	786,630	0.00%	✓	✓	45.25%	51.46%	3.28%	629,265	87.80%	12.20%	2.52%	5.68%	1.50%
15	786,630	0.00%	✓	✓	50.02%	47.67%	2.30%	591,121	73.68%	26.32%	5.32%	12.28%	6.75%
	786,629	0.00%	✓	✓	46.67%	50.41%	2.92%	613,837	78.40%	21.60%	3.65%	12.91%	2.94%

2020 Presidential Statistics

Population			Shapes		Partisan Lean			Demographics (VAP)					
ID	Total	+/-			Dem	Rep	Oth	Total	White	Minority	Hispanic	Black	Asian
Un	0				0.00%	0.00%	0.00%	0	0.00%	0.00%	0.00%	0.00%	0.00%
1	786,630	0.00%	✓	✓	53.20%	45.25%	1.55%	607,518	69.17%	30.83%	3.19%	21.28%	4.55%
2	786,629	0.00%	✓	✓	26.65%	72.01%	1.34%	609,599	92.43%	7.57%	1.20%	2.70%	0.82%
3	786,630	0.00%	✓	✓	71.17%	27.33%	1.49%	616,608	59.86%	40.14%	5.30%	26.85%	6.54%
4	786,630	0.00%	✓	✓	26.13%	72.27%	1.60%	607,644	89.22%	10.78%	1.89%	5.32%	1.14%
5	786,630	0.00%	✓	✓	35.83%	62.62%	1.55%	612,230	86.04%	13.96%	6.02%	4.71%	1.25%
6	786,630	0.00%	✓	✓	34.96%	63.68%	1.36%	628,719	87.37%	12.63%	2.58%	6.95%	0.74%
7	786,630	0.00%	✓	✓	44.79%	54.01%	1.20%	623,729	88.05%	11.95%	3.05%	3.56%	3.38%
8	786,629	0.00%	✓	✓	38.69%	59.88%	1.44%	603,912	78.51%	21.49%	4.07%	11.29%	3.93%
9	786,630	0.00%	✓	✓	47.69%	50.61%	1.71%	613,653	77.70%	22.30%	5.88%	12.63%	1.72%
10	786,630	0.00%	✓	✓	47.39%	50.91%	1.69%	616,057	73.52%	26.48%	3.13%	17.93%	3.12%
11	786,630	0.00%	✓	✓	78.27%	20.68%	1.05%	622,351	44.52%	55.48%	6.88%	44.34%	3.64%
12	786,630	0.00%	✓	✓	33.82%	64.66%	1.52%	603,837	89.54%	10.46%	1.59%	4.50%	1.84%
13	786,630	0.00%	✓	✓	50.70%	47.89%	1.41%	621,319	78.71%	21.29%	2.16%	13.35%	3.42%
14	786,630	0.00%	✓	✓	41.86%	56.80%	1.34%	629,265	87.80%	12.20%	2.52%	5.68%	1.50%
15	786,630	0.00%	✓	✓	50.69%	47.68%	1.62%	591,121	73.68%	26.32%	5.32%	12.28%	6.75%
	786,629	0.00%	✓	✓	45.25%	53.29%	1.46%	613,837	78.40%	21.60%	3.65%	12.91%	2.94%